

# **Index**

## Index

1. Description
2. Network connection
3. Usage
  - 3.1. Looking up connected devices
  - 3.2. Overview
  - 3.3. List editors
  - 3.4. Media Explorer
4. Settings

# 1. Description

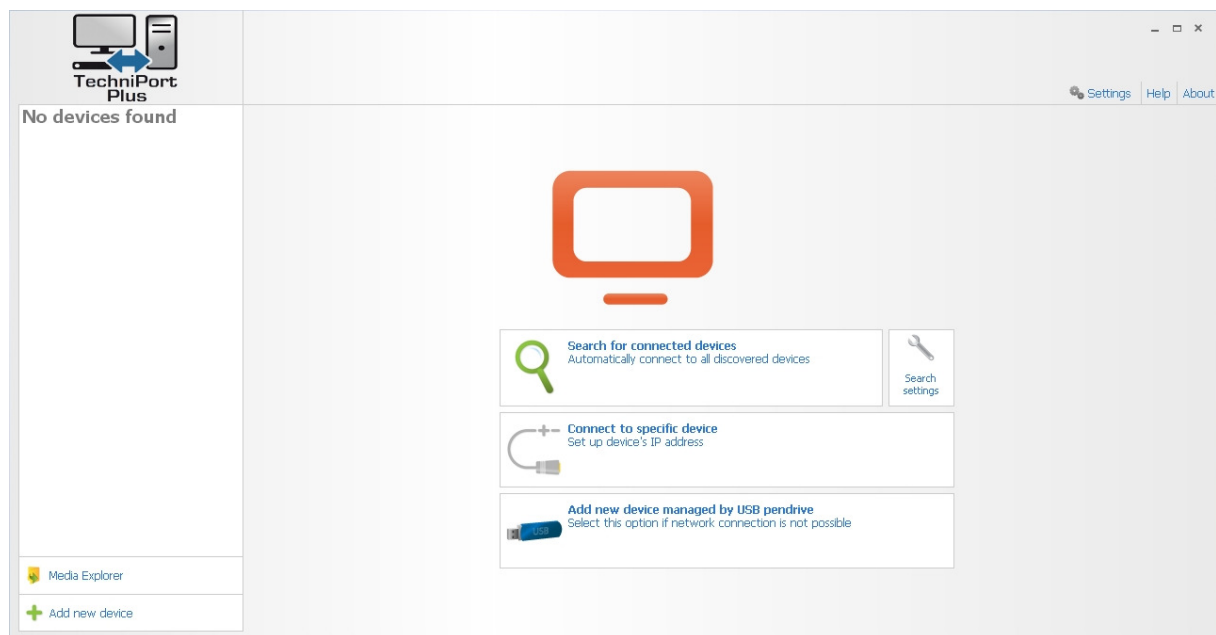
Adding new functionality Techniport Plus has evolved from the former products Techniport and Mediaport. This new piece of software enables the user to manage TV-, radio- and internet link lists all at once with just one PC application and provides an easy access to all the DVR contents stored on the device. Device specific data are transferred between the STB or TV and the application running on the PC by using either a network connection or by means of a USB stick.

## 2. Network connection

To establish a direct connection to a Technisat device a network cable must be used to make it accessible from your PC. For more information please refer to the according chapter of your device's manual.

## 3. Usage

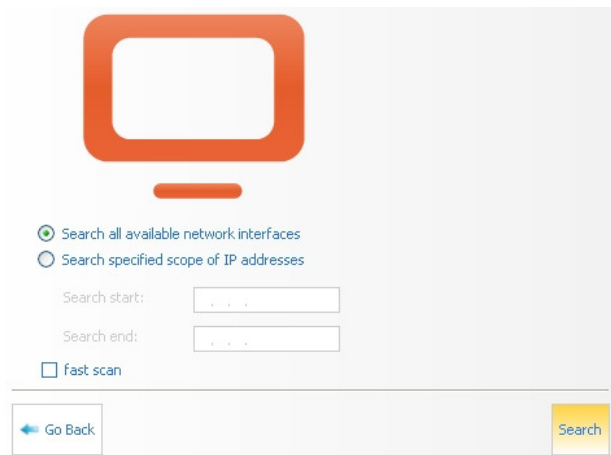
### 3.1. Looking up connected devices



After starting the program an overview will be presented to the user which allows an easy access to the most important functionality.

Now it is recommended searching the network for supported Technisat devices. Please note that Techniport Plus is also able to handle more than one connected device at a time.

In order to speed up the search process it is possible to configure some search parameters. However, the default settings have been chosen carefully which makes sure all properly connected Technisat devices are definitely going to be found, so tweaking the search setup is just an option.



The following settings are possible:

***Search all available network interfaces:***

This searches the entire IP address range. If more than one network card is installed all of them are considered during the discovery.

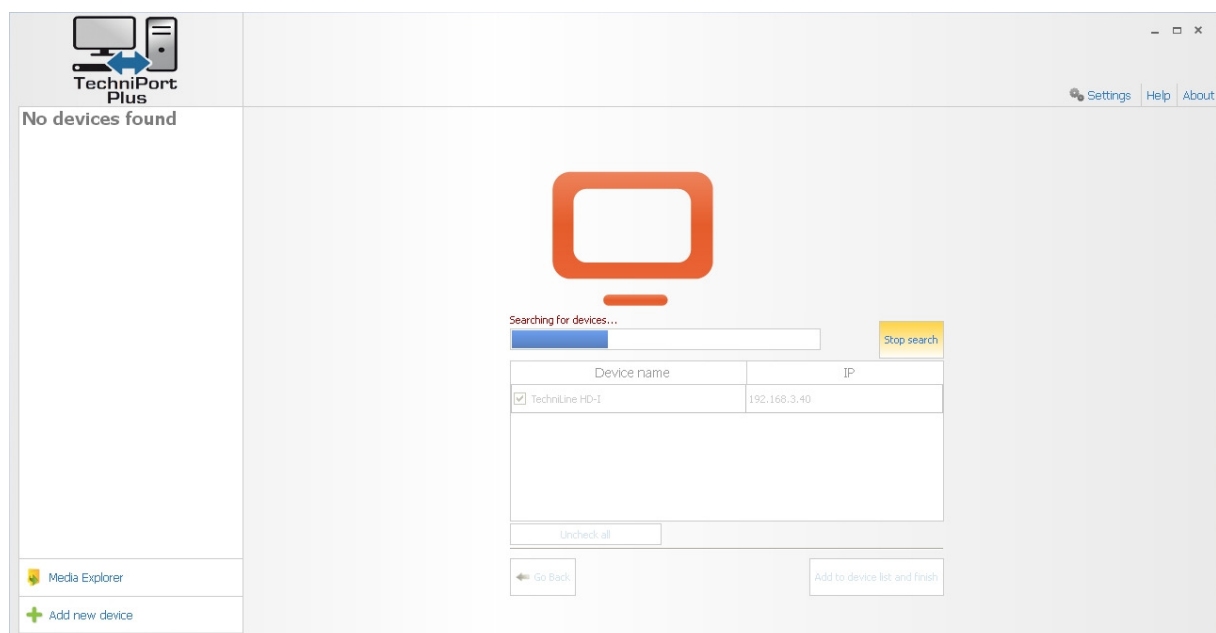
***Search specific scope of IP addresses:***

The search uses only the IP address range between the „Search start“ and the “Search end” IP address. All other IP addresses will be ignored.

***Fast scan:***

This method will only find Technisat devices with an integrated network adapter. If your device is e.g. connected via an external WiFi adapter it will never be found if this option is selected.

Clicking „Search“ will initiate an automatic search with the selected settings. Once the search completes a list with all devices found is presented to the user.



Device name	IP
<input checked="" type="checkbox"/> TechniLine HD-1	192.168.3.40

Uncheck all

Go Back Add to device list and finish

In front of every device entry there is a checkbox to select or deselect it. A click on “Add to device list and finish” accepts all selected devices and has them ready to manage. Now Techniport Plus is prepared to access all devices presented in the list on the left pane.

### 3.2. Overview

In the center of the view or underneath every device entry the list editors, the media explorer and the device connection settings are directly accessible. Clicking the respective button opens the related dialog.

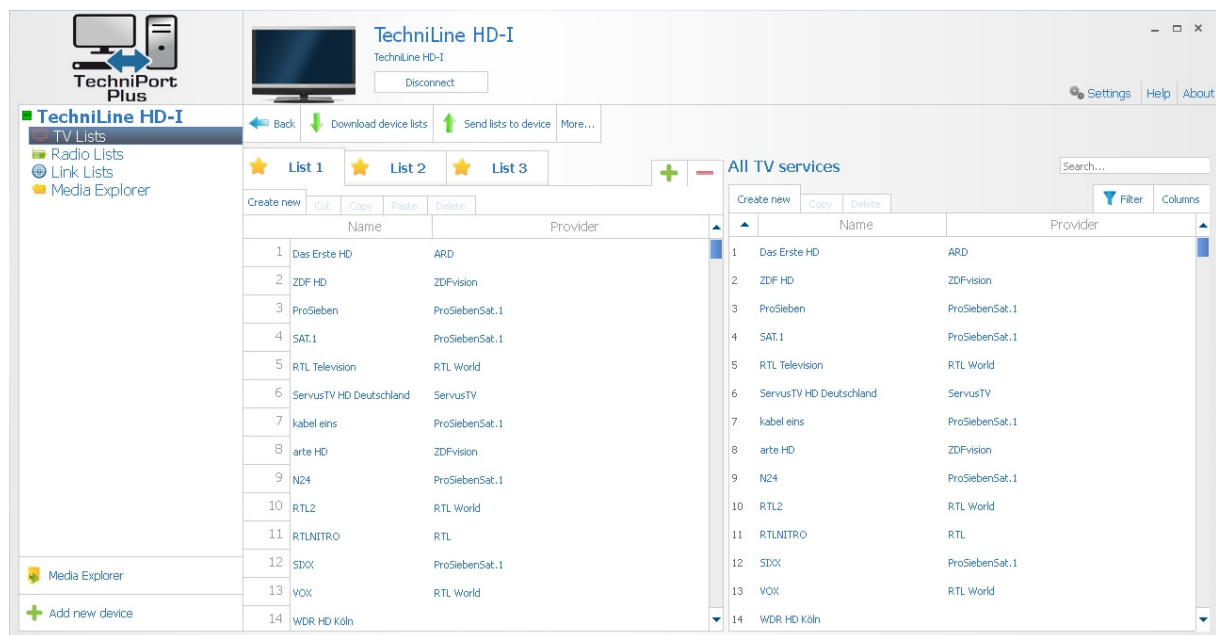


### 3.3. List editors

A click at one of the list editors opens a new view which offers the user a chance to download a list from a device, to create a new one or to open a previously stored data set.



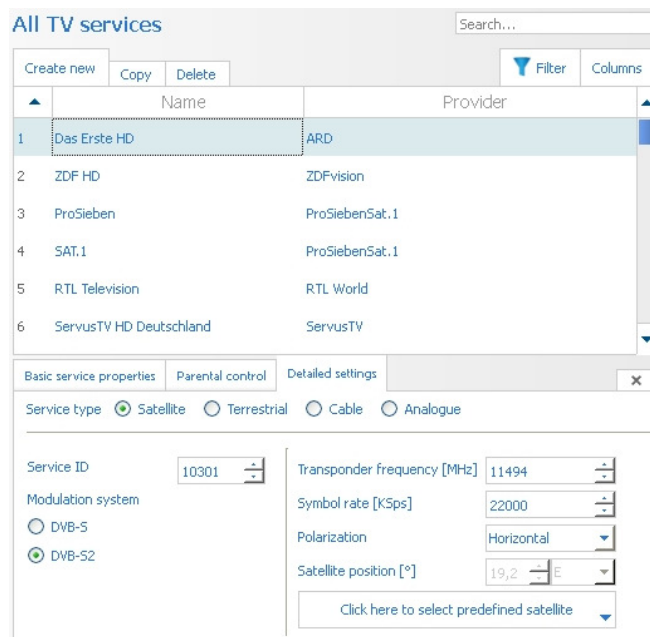
Because all the list editors have the same look and feel their handling is described taking the TV list editor as an example.



After downloading the list data Techniport Plus shows the list to edit on the left-hand side. On the right-hand side all available TV services are listed.

Now the selected list can be rearranged via drag&drop and new services can be added as well. By pressing the “Del” key or via the context menu, which is accessible by right-clicking the respective list item, the selected services can be removed from the list. Additionally it is possible to edit the list with the buttons above.

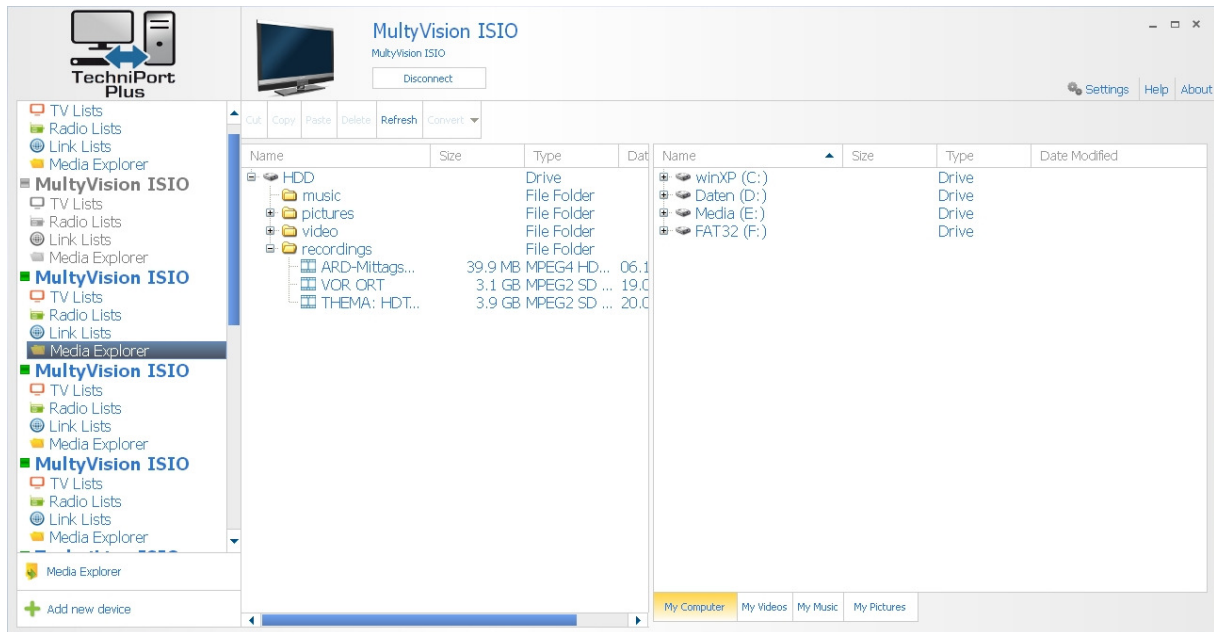
If a service in the list on the right pane is selected clicking “Show service settings” enables the user to edit the service data.



After all changes have been made the list can be uploaded to the device by clicking “Send list to device”. Clicking “More...” opens a view with additional options like saving the list to a file or export it to a USB stick.

### 3.4. Media Explorer

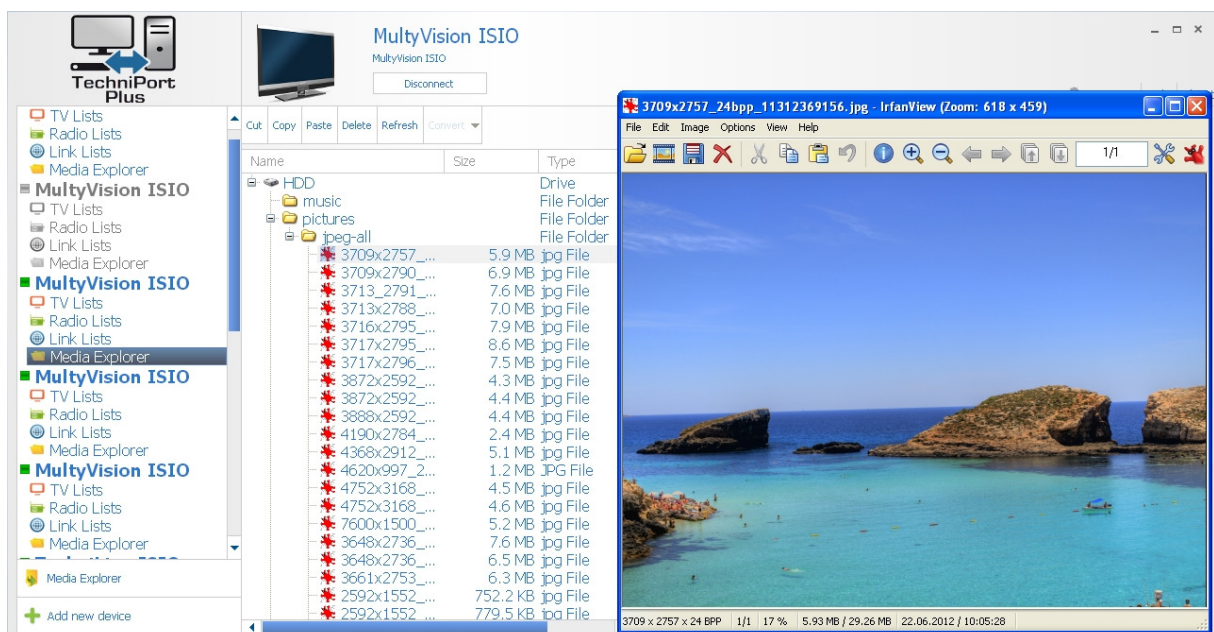
If the user selects the media explorer a view is opened to import or export recordings, videos, pictures or music files from or to the connected device. On the left-hand side of the view the content of the device is displayed and on the right-hand side the content of the PC is shown.



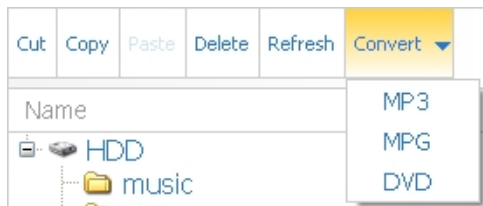
Copying any content (e. g. a recording) to the PC is possible by drag&drop or via the buttons above the device view. The copy process is started immediately and can be interrupted by pressing the “Cancel” button. If more than one element is selected all of them will be copied.



A double click on a picture's entry pops it up directly in the default picture viewer of the operating system.

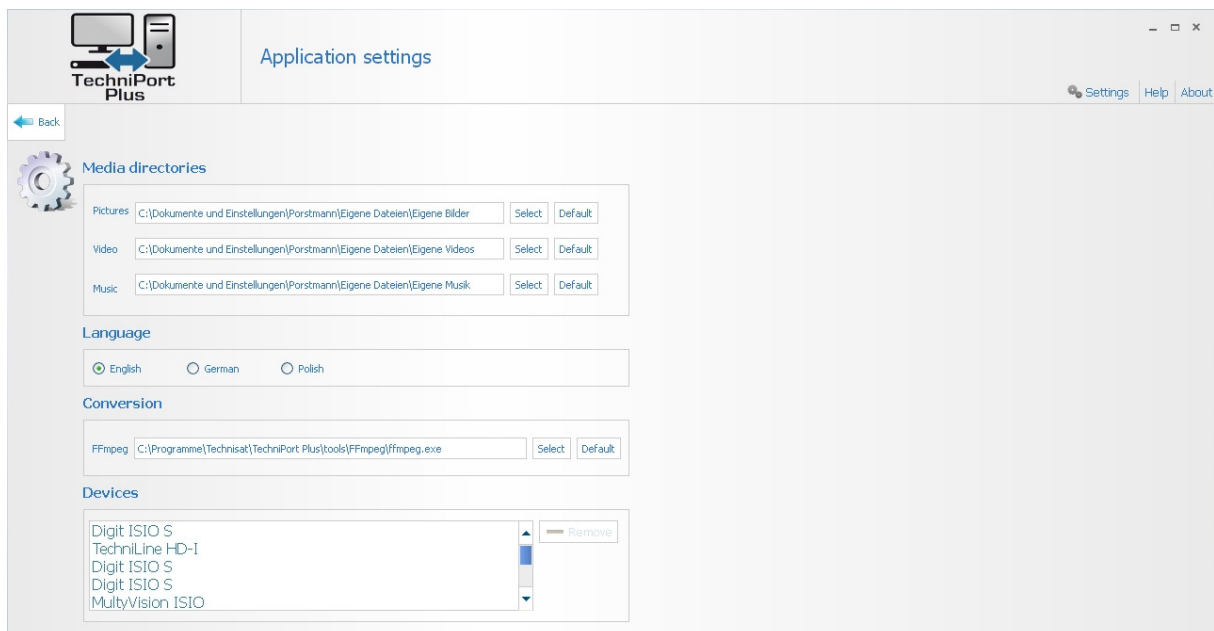


If the user selects an already downloaded recording in the right-hand side view this recording can be converted to another file format by clicking “Convert”.



After selecting a conversion format Techniport Plus prompts the user for the destination directory. If “MP3” or “MPG” is selected the conversion starts immediately. If “DVD” was chosen a folder with the name “DVD” will be created in the target directory. The content of this folder can be written to a DVD with a DVD burning program of the user’s choice.

## 4. Settings



Techniport Plus offers some specific settings which are accessible via the button “Settings” in the right upper corner of the program window.

### **Media directories:**

These folders are shown in the media explorer as shortcuts underneath the right view. If the user clicks to such button only the content of the selected folder is accessible.

### **Language:**

This selects the preferred menu language of the program.

### **Conversion:**

This setting defines the location where the conversion program ffmpeg is installed.  
**CAUTION:** A wrong path to ffmpeg breaks the media conversion functionality.

### **Devices:**

This edits the list of the devices that have been discovered earlier. In the pick list on the leftmost pane only those selected devices will be shown.